

PORTFOLIO SALE

1053-1057 S VANDEVENTER
ST. LOUIS, MO. 63110

FOR SALE



\$995,000

KING

REALTY ADVISORS

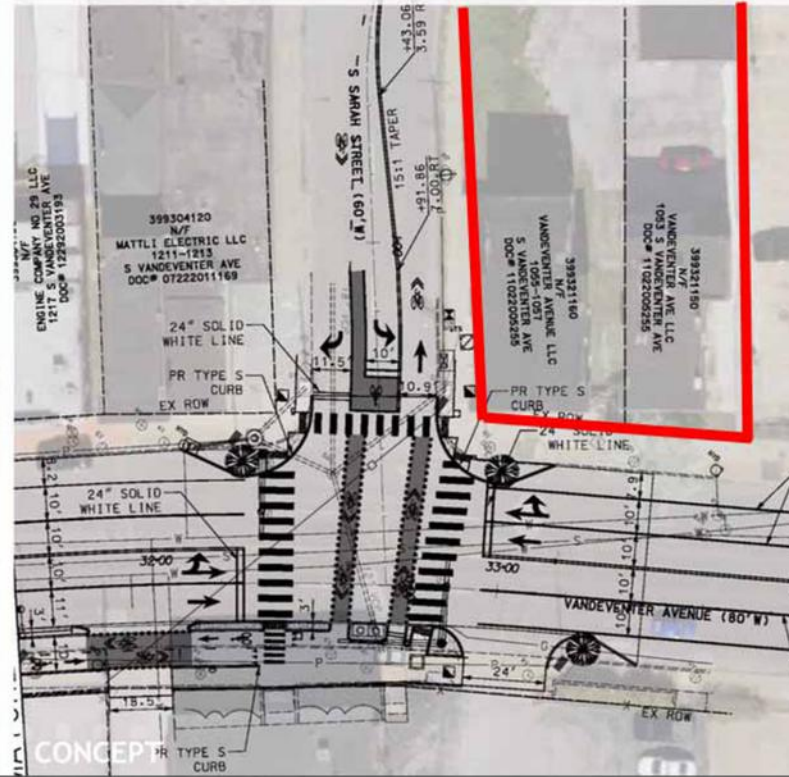
1053-1057 S VANDEVENTER

RASHAD QAASIM
314.339.0697
RQAASIM@KRASTL.COM

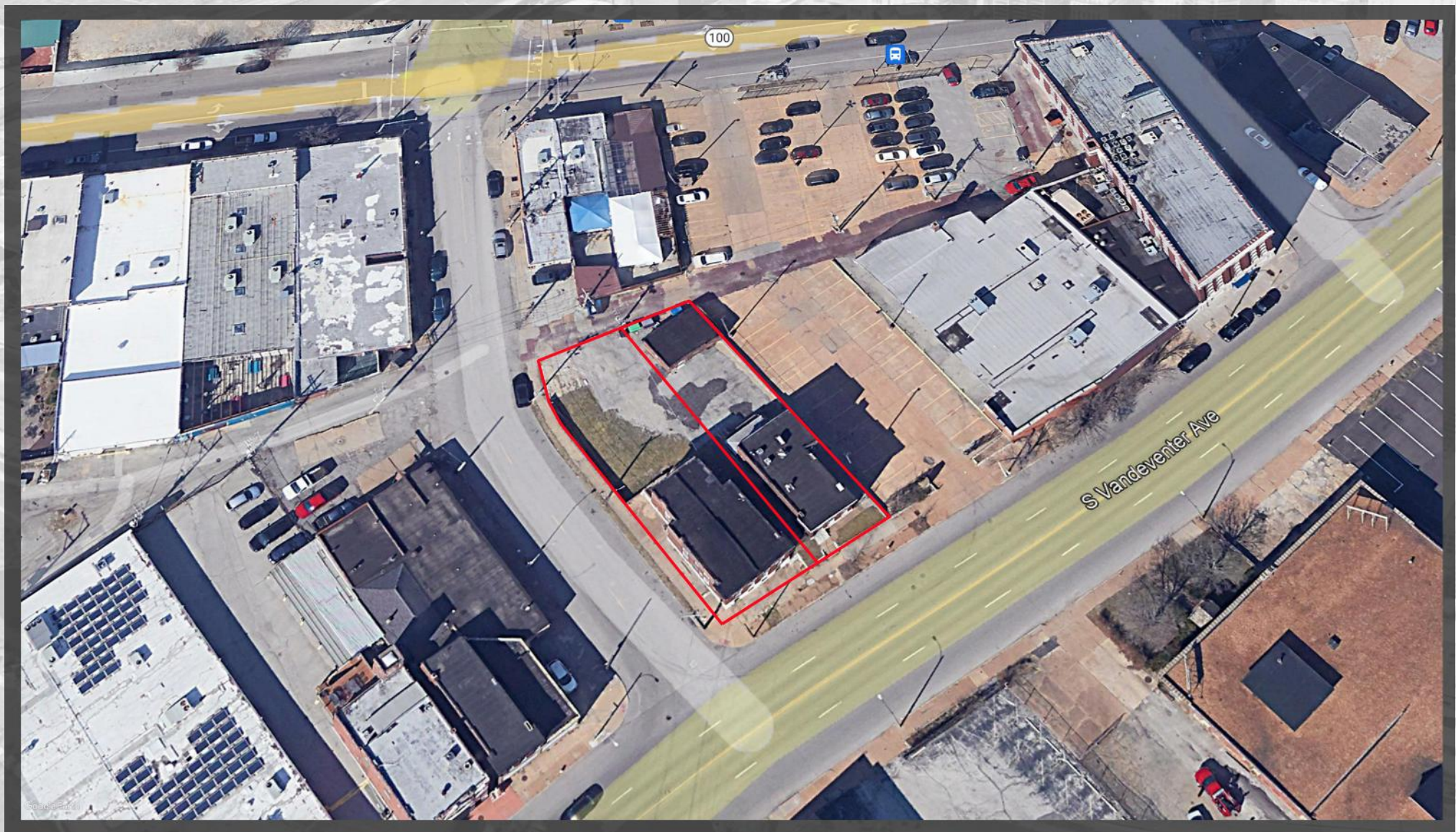
PROPERTY HIGHLIGHTS

- HARD CORNER OF VANDEVENTER AND SARAH ST (TOTALING .25 ACRES)
- AT THE PLANNED SIGNALIZED CROSSING FOR THE BRICKLINE GREENWAY'S TOWER GROVE CONNECTOR
- 1053 S VANDEVENTER CONSISTS OF A 2,400 SQ FT 2-FAMILY BUILDING ON .11 ACRES (FULLY OCCUPIED)
- 1055-57 S VANDEVENTER CONSISTS OF A 3,308 ST FT 4-FAMILY BUILDING ON .15 ACRES (NEEDS FULL REHAB)

Sarah and Vandeventer Intersection



AERIAL VIEW



LOCALITY MAP

